

## **Historic, Archive Document**

Do not assume content reflects current scientific knowledge, policies, or practices.



62.11

U. S. Department of Agriculture  
★ JAN 11 1941

# Cantaloupe

and Other

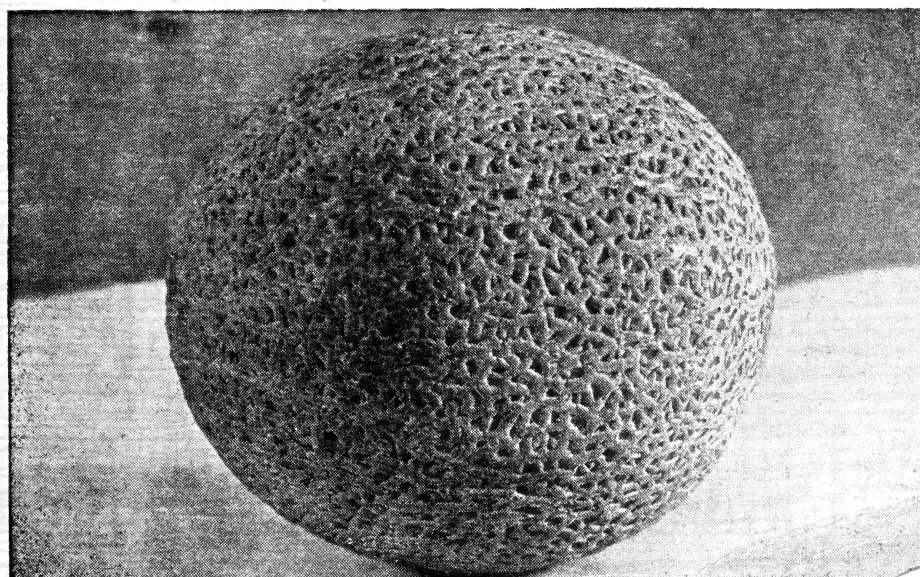
## Vine Seeds

**Woodside Seed Growers Co.**

200 South Main Street • Rocky Ford, Colorado

GROWERS OF HIGH QUALITY SEED

*Season*  
**1941**



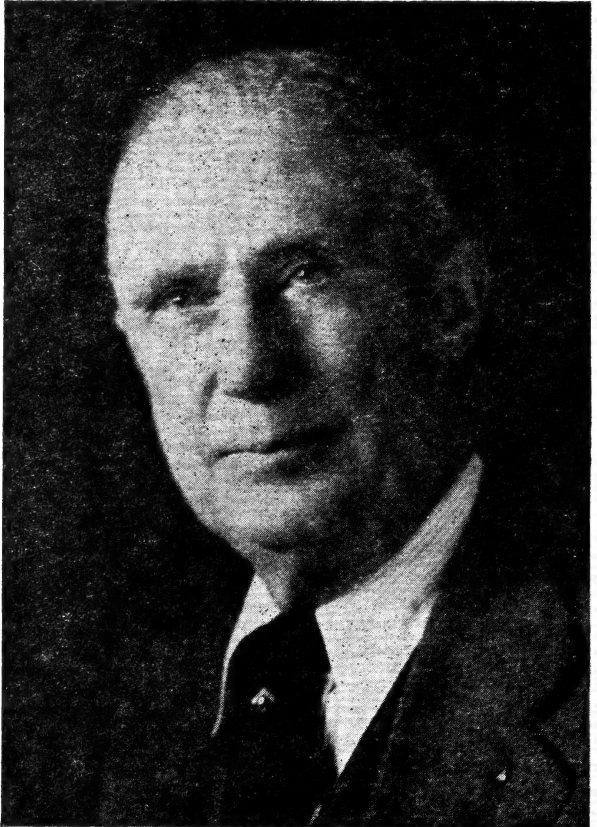
---

---

## *To Our Customers:*

We have tried each year to raise the standard of quality of the seeds we grow and sell and are constantly improving our melons, each year breeding out any faults that may show in them. This is something no one could afford to do who is growing for the market only.

Mr. Woodside started in the year 1911 to specialize in the growing of melon seed exclusively, following these tactics to the present time and is still active in this procedure. We certainly trust, through the efforts of E. S. Woodside and son, W. F. Woodside, we may continue to hold and increase our many valued and appreciated customers. It is with a great deal of pleasure that we send you this 1941 catalogue, and are confident that you will be more than pleased with the crops grown from our seed regardless of the variety or varieties you may decide to plant.



**E. S. WOODSIDE**

### **OUR MOTTO:**

**"Quality, Service and a Square Deal to All"**

**QUALITY**—Our desire is to make "QUALITY" the first consideration; next to make our prices as low as good seed can be sold; our policy has always been, the best is not quite good enough.

**SERVICE**—Seed will be shipped same day order is received.

**SQUARE DEAL TO ALL**—Your order, either large or small, will be appreciated, receive **PROMPT ATTENTION** and filled from select hand-cut seed.

While we do not claim to have the only good seed on the market, we do claim that **THERE IS NONE BETTER THAN THE GRADE WE OFFER.**

---

---



## WHEN TO ORDER

We strongly advise our customers to send in their orders immediately upon receipt of this catalog, as they will then have the seeds on hand when they need them, and avoid unnecessary delay often caused by the rush of the busy season. It is advisable to order early while our stock is complete—thus avoiding any disappointment.

## USE OUR ORDER SHEET

Carefully fill out the blank spaces at the top for shipping directions. Use one line for each kind of seed ordered.

Always carry out the price of each item and keep a copy of your order.

## HOW TO ORDER

Be sure to give your full name, post office, with street number or rural route. Remittance may be made in stamps (if one dollar or less), certified check, bank draft or post office money order. We will also ship C.O.D. when one-fourth of the remittance accompanies order.

## CO-OPERATION

We want to supply growers who appreciate good seed. If after ordering from us you have any cause for complaint, write us fully at once. Just criticism is an aid to improvement and satisfied customers are our pride.

## WHY NOT BUY ROCKY FORD CANTALOUPE SEED AT ROCKY FORD?

The Rocky Ford district produces and supplies more than 90 per cent of the cantaloupe seed in the entire country. Practically all of the cantaloupe seed handled by the seed trade is secured either directly or indirectly from this district. Therefore would it not be good business policy to buy your Cantaloupe Seed direct from Rocky Ford, and direct from the producers before it passes through so many hands? **Please think this over and give us a trial order.**

## HELPFUL SUGGESTIONS

We are at all times willing to offer any assistance in our power regarding culture, best varieties for your district, etc., if you will explain your climatical and market conditions, also average growing season. Do not hesitate in writing us for information.

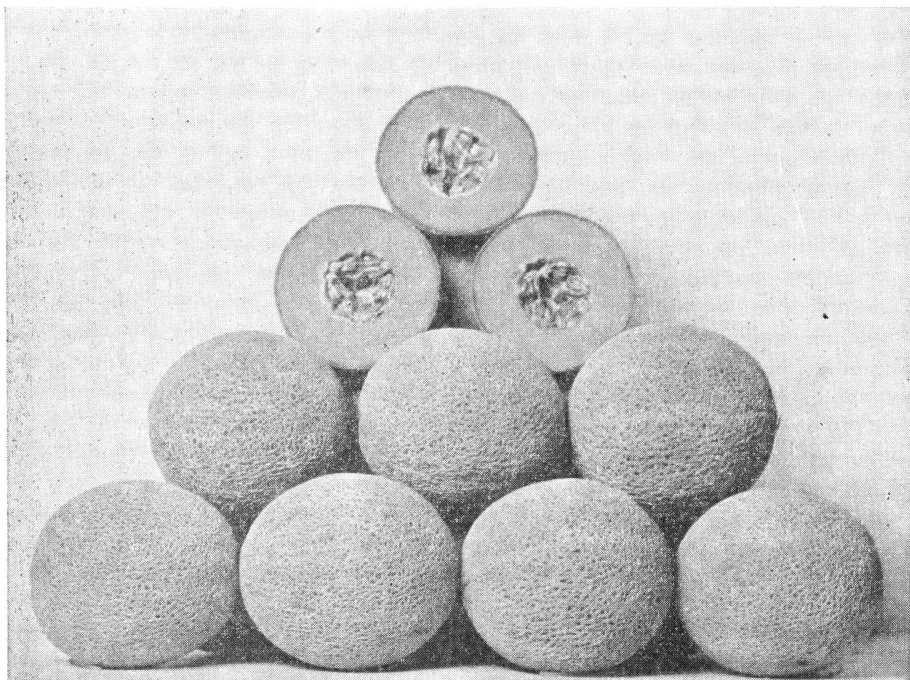
## SELECTION, GROWING AND WARRANTY

Our planting stocks are kept up to the highest standard by systematic selection. Our seed-growing is carried on in the most up-to-date manner. The seed we offer is the best selection from fields grown exclusively for seed purposes; was saved from stock true to type, from well-netted, fully matured standard-sized melons of the best seed qualities. Our seed is all cut by hand, well-cured, is thoroughly cleaned; all light seed fanned out, and is of the highest germination. While we use every precaution in sending out pure and reliable seed, we, in common with other responsible seed houses, sell our seed subject to the following disclaimer, it being adopted by the American Seed Trade Association. **DISCLAIMER:** We, Woodside Seed Growers Company, give no warranty, express or implied, as to description, productiveness or any other matter of any seed we sell, and will not be responsible for the crop.

## REFERENCES

The Rocky Ford National Bank, any business firm of Rocky Ford, the Packer Produce Mercantile Agency (The Red Book) of Kansas City, Missouri; The Produce Reporter Company (The Blue Book) of Chicago, Illinois; Dun and Bradstreet, Denver, Colorado.

# Woodside Winner Cantaloupe



## WOODSIDE'S WINNER

### Superior Strain For The Early Market

One of the finest Hale's Best strains yet developed. Our boosters for this melon are actual farmers and growers who plant their entire acreage of this variety. Many write to us stating "I grew the 'Winner' in the same field with other strains of the Hale's Best and find the 'Winner' about one week earlier, an unusually heavy yielder and highly disease resistant."

The melons run uniform in size, average about twelve pack flat, have heavy solid net showing practically no stripe or rib, small seed cavity, the flesh being of a deep pink color the vines are very prolific which eliminates cull and slick inferior melons. Is a splendid shipper.

Through experienced growers we feel safe in advising you will find no better cantaloupe than the "Winner" for home consumption or commercial shipping on the market. Matures in 80 days.

**PRICE:** Pkt. 5c; oz. 10c;  $\frac{1}{4}$  lb. 35c;  $\frac{1}{2}$  lb. 65c; 1 lb. \$1.25; 5 to 10 lbs. @ \$1.10 per lb. 10 to 25 lbs. @ \$1.00 per lb.; 25 lbs. or more @ 90c per lb. Prepaid.

---

---

## Early Hale's Best Cantaloupe

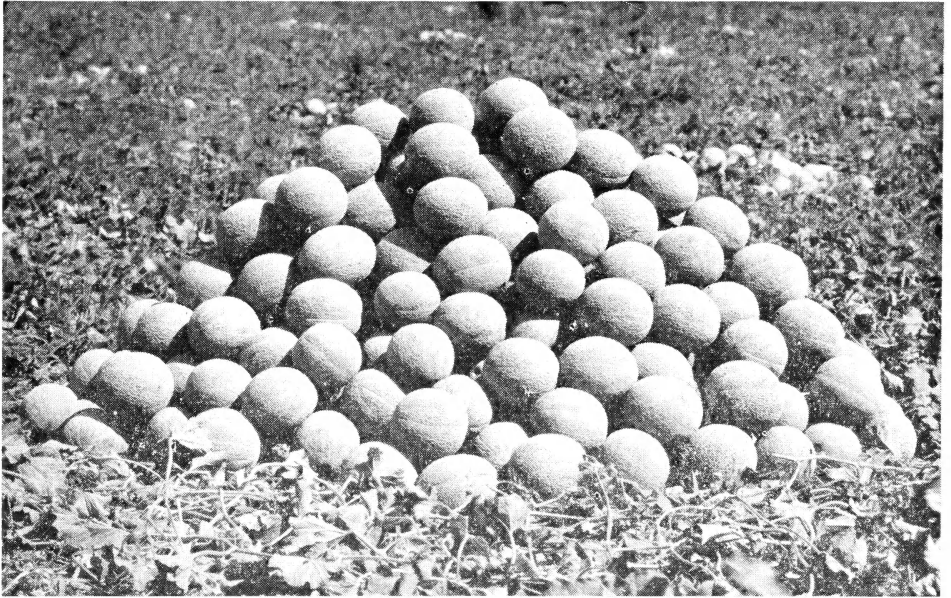
Hale's Best is the best known cantaloupe in the United States and our seed is all grown from our personally selected stock seed. The melons run mostly jumbo sizes; a percentage showing slight rib and faint stripe, yet retaining the extreme earliness. The flesh is deep salmon colored, firm and of excellent quality. It is a splendid shipper, staying firm for days after being picked.

**PRICE:** Pkt. 5c; oz. 10c;  $\frac{1}{4}$  lb. 35c;  $\frac{1}{2}$  lb. 65c; 1 lb. \$1.25; 5 to 10 lbs. @ \$1.10 per lb. 10 to 25 lbs. @ \$1.00 per lb.; 25 lbs. or more @ 90c per lb. Prepaid.

# New Ideal Cantaloupe

By careful selection this improved strain of Hale's Best has become another of the outstanding melons in districts where a large uniform early melon is desired; on an average they will produce within 80 to 85 days from the date of planting.

Vines are unusually healthy, vigorous and very prolific; the melons run Jumbo in size and oval in shape, practically all solid net; the flesh is a deep salmon color, very firm and fine grained. Has an excellent flavor, small seed cavity and is a fine shipper.



**NEW IDEAL**

Since we introduced this melon the trade has praised it very highly; we continually have repeat orders and additional new customers each season.

We strongly urge you to give this melon a trial; you will be more than pleased with the appearance, uniformity, size and yield at harvest time, as it is adapted to nearly all melon growing districts in the country, where a jumbo melon is preferred; will average nine to twelve melons to the flat crate.

**PRICE:** Pkt. 5c; oz. 10c;  $\frac{1}{4}$  lb. 35c;  $\frac{1}{2}$  lb. 65c; 1 lb. \$1.25; 5 to 10 lbs. @ \$1.10 per lb.  
10 to 25 lbs. @ \$1.00 per lb.; 25 lbs. or more @ 90c per lb. Prepaid.

# Hale's Best Cantaloupe No. 36



HALE'S BEST NO. 36

One of the oldest Improved Selections made from the Hale's Best Variety being introduced in 1932, yet the Number 36 is still one of the largest selling varieties of this strain and is known in every district where cantaloupes are produced. It can be grown for almost any purpose, home gardens, roadside stands, hauling by truck or packing for distant markets.

The melons run large and very uniform in size, have slightly oval shape, the flesh is a salmon color of an excellent flavor; seed cavity being much smaller than the original Hale's Best. The Number 36 is an extra heavy yielder due to the vines being strong and hardy and is among the earliest to mature for the market. Will mature in 85 to 90 days.

**PRICE:** Pkt. 5c; oz. 10c;  $\frac{1}{4}$  lb. 35c;  $\frac{1}{2}$  lb. 65c; 1 lb. \$1.25; 5 to 10 lbs. @ \$1.10 per lb.  
10 to 25 lbs. @ \$1.00 per lb.; 25 lbs. or more @ 90c per lb. Prepaid.

---

---

## Resistant No. 8

(Also No. 8-1 which is a selection from No. 8)

These melons run extra large and have a very heavy strong vine growth; they are attractive and well netted, have thick flesh and small seed cavity; are a few days later in maturing than the Hale's Best variety but have wonderful shipping and carrying qualities. Due to the large sizes are used in many districts even though not troubled with Mildew, where growers require a melon for roadside markets and loose hauling to markets by truck

**PRICE:** Pkt. 5c; oz. 10c;  $\frac{1}{4}$  lb. 35c;  $\frac{1}{2}$  lb. 65c; 1lb. \$1.25;  
5 to 10 lbs. @ \$1.10 per lb.; 10 to 25 lbs. @ \$1.00 per lb.;  
25 lbs. or more @ 90c per lb. Prepaid

# Market Surprise Cantaloupe

This melon was developed for the market gardener who wants an extra large, early maturing, well netted cantaloupe to sell at roadside stands and for bulk hauling in trucks; if it were packed, would run largely to nine pack Jumbo flats.

For trade desiring size and quality included, this melon is unsurpassed; has nearly a solid net, showing very little of the distinct stripe.

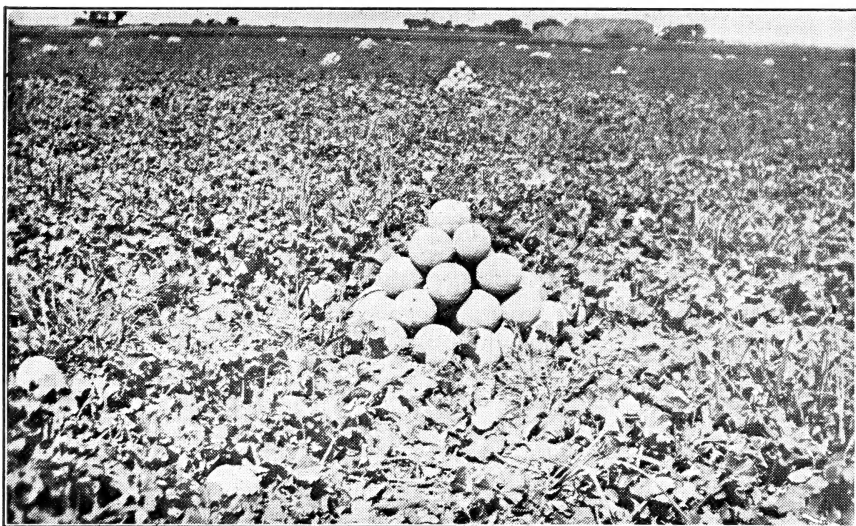
The flesh is thick and of a deep salmon color with small seed cavity. Should not be picked until it will slip freely from the vine because of its firmness after it is a golden color.

**PRICE:** Pkt. 5c; oz. 10c;  $\frac{1}{4}$  lb. 35c;  $\frac{1}{2}$  lb. 65c; 1 lb. \$1.25; 5 to 10 lbs. @ \$1.10 per lb. 10 to 25 lbs. @ \$1.00 per lb.; 25 lbs. or more @ 90c per lb. Prepaid.

---

---

## Hale's Best Cantaloupe No. 112



HALE'S BEST NO. 112

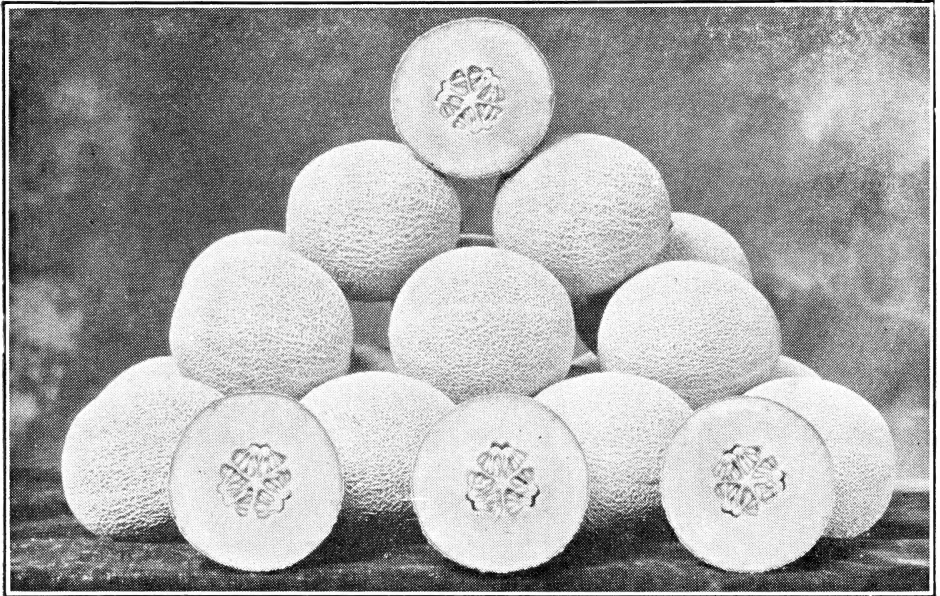
Number 112 is still outstanding in many cantaloupe growing districts where an Improved strain of the Hale's Best of a slightly smaller size is desired. In appearance it resembles the Number 36; is a heavily netted melon showing a faint stripe; has a thick salmon colored flesh and of an excellent flavor, small seed cavity and is a good shipper. The vines make a strong vigorous growth which assures well-matured melons throughout the picking season.

**PRICE:** Pkt. 5c; oz. 10c;  $\frac{1}{4}$  lb. 35c;  $\frac{1}{2}$  lb. 65c; 1 lb. \$1.25; 5 to 10 lbs. @ \$1.10 per lb. 10 to 25 lbs. @ \$1.00 per lb.; 25 lbs. or more @ 90c per lb. Prepaid.  
Stock Seed @ 25c lb. additional



# "Perfected Perfecto" Cantaloupe

(Also known as Superfecto)



## PERFECTED PERFECTO MELONS

The Perfecto ripens evenly and for a long period; melons run fairly large, up to twelve pack Jumbo flat, very uniform in size; coarse, solid heavy net, being perfect in appearance.

The flesh is a very dark salmon color, fine grained and of an excellent flavor; the seed cavity averages much smaller than any other Rocky Ford varieties, the rich colored flesh extending to the rind.

The vines make an extra strong, vigorous growth, and are highly disease resistant; due to this fact hills should be spaced farther apart than other cantaloupe varieties. For a later maturing melon, we urge you to plant the Perfected Perfecto.

PRICE: Pkt. 5c; oz. 10c;  $\frac{1}{4}$  lb. 35c;  $\frac{1}{2}$  lb. 65c; 1 lb. \$1.25; 5 to 10 lbs. @ \$1.10 per lb. 10 to 25 lbs. @ \$1.00 per lb.; 25 lbs. or more @ 90c per lb. Prepaid.

---

---

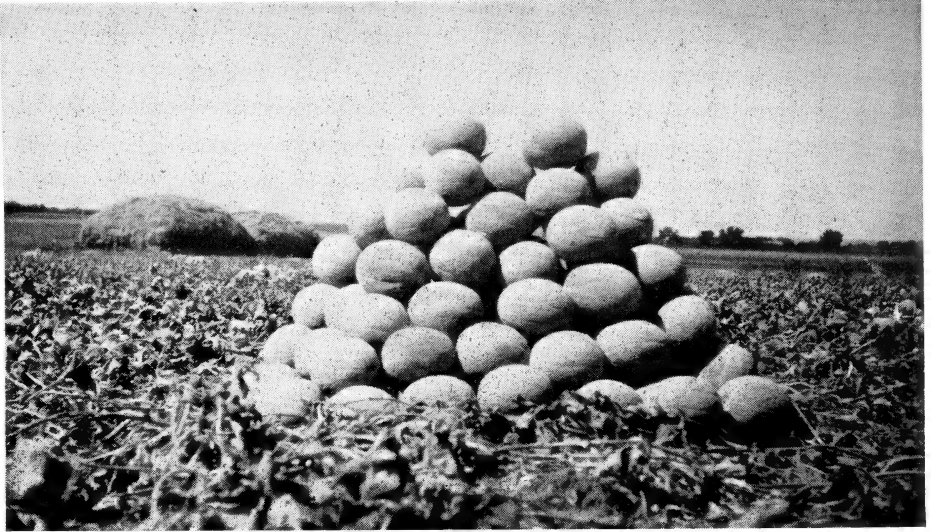
## EARLY OTERO CANTALOUPE

(A Green Fleshed Melon)

This melon is extra early and a particularly rust resistant strain. The plants are strong, vigorous growers from the start and vines are extremely prolific, the first setting often have 12 to 15 marketable melons to the hill. The net covers the entire melon showing a slight rib. Has a very spicy flavor similar to the original Rocky Ford which many contend was the sweetest of all. Size run from 36 to 45 melons in a standard crate. Will mature in 75 to 80 days.

PRICE: Pkt. 5c; oz. 10c;  $\frac{1}{4}$  lb. 35c;  $\frac{1}{2}$  lb. 65c; 1 lb. \$1.25; 5 to 10 lbs. @ \$1.10 per lb. 10 to 25 lbs. @ \$1.00 per lb.; 25 lbs. or more @ 90c per lb. Prepaid.

# Mildew Resistant Cantaloupe No. 45



## RESISTANT NO. 45

The Mildew Resistant Cantaloupe is no longer an experiment; the production and shipping qualities due to the fact No. 45 must be picked on a FULL SLIP and will then carry to the far distant markets, arriving in perfect condition, has won its fame for being the most popular of the Mildew Resistant Strains.

It has as heavy a net as the Improved Hale's Best varieties, is similar in shape and very uniform; the melons run largely to Jumbo in size.

The No. 45 has a thick salmon colored flesh, is well flavored, the melon has a small seed cavity and is perhaps one week later in maturing than the Hale's Best.

If you want a melon with proven shipping and carrying qualities, a melon that MUST be VINE RIPENED, we advise giving the Mildew Resistant No. 45 a trial.

Will mature in 90 to 95 days.

PRICE: Pkt. 5c; oz. 10c;  $\frac{1}{4}$  lb. 35c;  $\frac{1}{2}$  lb. 65c; 1 lb. \$1.25; 5 to 10 lbs. @ \$1.10 per lb. 10 to 25 lbs. @ \$1.00 per lb.; 25 lbs. or more @ 90c per lb. Prepaid.

---

---

## Resistant No. 50

This was the first melon to be released that was entirely free from Mildew; they run rather oblong in shape and vary in size, however, will run strong to twelve pack Jumbo flats; the vines make a very vigorous growth, flesh is a salmon color with medium size seed cavity; heavy net but show some stripe.

## Resistant No. 50-13

Also entirely free of Mildew, melons run smaller and much more uniform than the No. 50, have a heavy net with prominent stripe; the flesh is very firm and of a deep salmon color and a good flavor; vines are very prolific and have an unusually heavy set; a good melon where your trade demands a smaller size.

PRICE ON ABOVE RESISTANT NUMBERS: Pkt. 5c; oz. 10c;  $\frac{1}{4}$  lb. 35c;  $\frac{1}{2}$  lb. 65c; 1 lb. \$1.25; 5 to 10 lbs. @ \$1.10 per lb.; 10 to 25 lbs. @ \$1.00 per lb.; 25 lbs. or more @ 90c per lb. Prepaid.

# Pride of Wisconsin



PRIDE OF WISCONSIN

One of the best all around varieties of Muskmelon yet introduced. It is very productive, bearing fruit with a very thick, firm, dark pink flesh. Melons have a very coarse, loosely laced netting and are slightly ribbed. Is similar in appearance both inside and out to the Honey Rock but much improved as to uniformity. Holds up well for several days allowing plenty of time for marketing. Will mature in 85 to 90 days.

**PRICE:** Pkt. 5c; oz. 10c;  $\frac{1}{4}$  lb. 35c;  $\frac{1}{2}$  lb. 65c; 1 lb. \$1.25; 5 to 10 lbs. @ \$1.10 per lb. 10 to 25 lbs. @ \$1.00 per lb.; 25 lbs. or more @ 90c per lb. Prepaid.

---

## Sugar Queen Melon

A leading white skinned variety of Cantaloupe. Has a thin, tough rind covered with a slight netting and will stand long distance shipping. Has an unusually small seed cavity, thick orange colored flesh. Vines are very hardy and disease resistant. Produces a heavy yield over a long period at the maturity stage. Has a much better flavor if not picked from the vine until it will slip freely then will carry in good shape to distant markets. Melons run uniform in size and shape and flavor is unsurpassed. Will mature in 90 to 95 days.

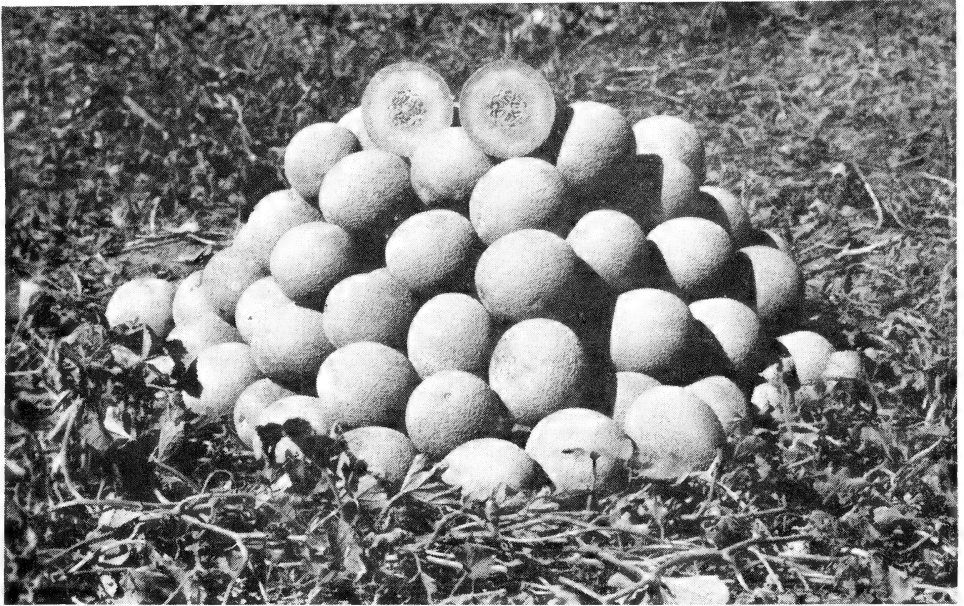
**PRICE:** Pkt. 5c; oz. 10c;  $\frac{1}{4}$  lb. 35c;  $\frac{1}{2}$  lb. 65c; 1 lb. \$1.25; 5 to 10 lbs. @ \$1.10 per lb. 10 to 25 lbs. @ \$1.00 per lb.; 25 lbs. or more @ 90c per lb. Prepaid.

---



# Imperial Sunset

OR SALMON TINTED HONEY BALL



## IMPERIAL SUNSET

The skin of this new melon is a light creamy color. Melons uniform in size, mostly standards and jumbos. Oval in shape, heavily netted, seed cavity very small, color of flesh mostly salmon tint, a very small per cent green meat, flavor unusually good.

Makes a strong, vigorous vine (practically immune from disease), and stays green when the vines of the Honey Dew and Honey Ball are practically dead. It matures a little later than above mentioned varieties and should be picked on a full slip.

**PRICE:** Pkt. 5c; oz. 10c;  $\frac{1}{4}$  lb. 35c;  $\frac{1}{2}$  lb. 65c; 1 lb. \$1.25; 5 to 10 lbs. @ \$1.10 per lb. 10 to 25 lbs. @ \$1.00 per lb.; 25 lbs. or more @ 90c per lb. Prepaid.  
Stock Seed @ 25c lb. additional

---

---

## Honey Rock Cantaloupe

(Also Known as Sugar Rock)

It is early and prolific. Size, medium. Shape, mostly round. The rind is hard and is of a light slate color covered with a coarse, irregular netting. The thick salmon colored flesh is firm and has a distinct pleasing flavor that appeals to all who enjoy a good cantaloupe. It should be picked on a full slip. It is a fine home garden melon. Our seed is Colorado grown and of the best quality.

**PRICE:** Pkt. 5c; oz. 10c;  $\frac{1}{4}$  lb. 35c;  $\frac{1}{2}$  lb. 65c; 1 lb. \$1.25; 5 to 10 lbs. @ \$1.10 per lb. 10 to 25 lbs. @ \$1.00 per lb.; 25 lbs. or more @ 90c per lb. Prepaid.

---

---

## Hearts of Gold Cantaloupe

The melons run from oval to oblong in shape; very uniform in size, averaging a little larger than the Rocky Ford varieties. While it is a ribbed melon, the ribs are not prominent and are very heavily netted. The flesh is a rich orange color, fine-grained and of excellent flavor. The seed cavity is small. The melon does not turn yellow when ripe but retains its natural green color and remains solid and firm for days after it is picked from the vine.

**PRICE:** Pkt. 5c; oz. 10c;  $\frac{1}{4}$  lb. 35c;  $\frac{1}{2}$  lb. 65c; 1 lb. \$1.25; 5 to 10 lbs. @ \$1.10 per lb. 10 to 25 lbs. @ \$1.00 per lb.; 25 lbs. or more @ 90c per lb. Prepaid.

# Honey Ball Melon



The vines of the Honey Ball are very prolific and seem to stand more dry weather than most other varieties; the melon in appearance is similar to the Honey Dew but is much smaller and more uniform in size, averaging about 5 inches in diameter, nearly round in shape and slightly netted; has a very thick flesh with a spicy flavor, to most people superior to the Honey Dew.

It keeps well and is a good shipper. For distant markets, handles about the same as the Honey Dew. For home use and nearby markets, it should not be picked until it will slip from the vine; it is in best condition for eating when the rind will give under pressure of the thumb, it can be served in halves like cantaloupes.

**PRICE:** Pkt. 5c; oz. 10c;  $\frac{1}{4}$  lb. 35c;  $\frac{1}{2}$  lb. 65c; 1 lb. \$1.25; 5 to 10 lbs. @ \$1.10 per lb. 10 to 25 lbs. @ \$1.00 per lb.; 25 lbs. or more @ 90c per lb. Prepaid.

---

---

## Improved Pink Meat Cantaloupe

(Also Known as Burrell Gem)

This melon is large, averaging about 6 inches in length, tapering at the ends,  $4\frac{1}{2}$  to 5 inches in diameter, with well defined ribs, heavily netted, with a distinct stripe between. The flesh is a deep salmon color, very thick and fine-grained. It has a rich, spicy flavor excelled by none. The seed cavity is unusually small, which accounts for its superior shipping qualities.

**PRICE:** Pkt. 5c; oz. 10c;  $\frac{1}{4}$  lb. 30c;  $\frac{1}{2}$  lb. 55c; 1 lb. \$1.10; 5 to 10 lbs. @ \$1.00 per lb. 25 lbs. or more @ 90c per lb. Prepaid.

---

---

## Pearl Pink Cantaloupe

(Also Known as Abbott's Pearl)

This melon is a favorite in many sections. The vines are hardy and vigorous. The shape is slightly oval, almost round. The color is a whitish-green. It shows no ribs and has a wide, coarse netting. The flesh is a deep salmon color to the rind, fine-grained and very firm. The seed cavity is extremely small, therefore it is one of the best keepers and an excellent shipping melon.

**PRICE:** Pkt. 5c; oz. 10c;  $\frac{1}{4}$  lb. 30c;  $\frac{1}{2}$  lb. 55c; 1 lb. \$1.10; 5 to 10 lbs. @ \$1.00 per lb. 25 lbs. or more @ 90c per lb. Prepaid.

# Order Sheet

Please read Directions For Ordering on Page 3 of catalogue. More Order Sheets will be sent upon request. Always write letters on a separate sheet from your order.

## Woodside Seed Growers Company

ROCKY FORD, COLORADO

Ship by Mail, Express, Freight

AMOUNT ENCLOSED

Date ..... 194.....

Cash, \$.....

Your Name .....  
(Please write very plainly)

Draft .....

Postoffice .....

P. O. Order .....

County ..... State .....

Street and No. ....

Express Order .....

P. O. Box No. .... R. F. D. No. ....

Name of town to which you wish .....

Stamps .....

Freight or Express Shipment made .....

NOTICE: All sales made subject to customary disclaimer of the seed trade.  
WOODSIDE SEED GROWERS CO.

Pkts.	Ozs.	Lbs.	KINDS OF SEED	PRICE
			CANTALOUPE—Early Hale's Best	
			Hale's Best No. 36	
			New Ideal	
			Hale's Best No. 112	
			Woodside's Winner	
			Mildew Resistant No.	
			Market Surprise	
			Perfected Perfecto (or Superfecto)	
			Early Otero	
			Pride of Wisconsin	
			Sugar Queen Melon	
			Hearts of Gold	
			Improved Pink Meat (or Burrell Gem)	
			Pearl Pink (or Abbott's Pearl)	
			Imperial Sunset (or Salmon Tint Honey Ball)	
			Honey Ball	
			Golden Melodew	

We pay all Postage and Express Charges at the prices listed in Catalogue.

QUANTITY			KINDS OF SEED	PRICE
Pkts.	Ozs.	Lbs.	Amount Carried Forward	
			<b>WATERMELON—Cut Red Tom Watson</b>	
			Wondermelon (Improved Kleckley Sweet)	
			Stone Mountain	
			Klondike (Brown Seeded)	
			Klondike (Black Seeded)	
			Winter Queen (Black Seeded)	
			Winter Queen (Grey Seeded)	
			Early Kansas	
			Cuban Queen	
			<b>HONEY DEW—Regular Green Meat</b>	
			Golden Rind Honey Moon	
			Golden Beauty Casaba	
			Honey Rock	
			<b>CABBAGE—Copenhagen Market</b>	
			Golden Acre	
			<b>CUCUMBER—Davis Perfect</b>	
			Early Fortune	
			Woodruff's Hybrid	
			Black Diamond	
			<b>LETTUCE—New York No. 54</b>	
			<b>ONIONS—Yellow Sweet Spanish</b>	
			White Sweet Spanish	
			<b>Total</b>	

EXTRA—With each order of \$1.00 or more, we will send an ounce of any of our favorite varieties of Cantaloupe Seed to anyone who will send us the names of five MARKET GARDENERS or five people who buy Vine Seeds. State Variety.

Name	R. F. D. No.	Town	State

# Order Sheet

Please read Directions For Ordering on Page 3 of catalogue. More Order Sheets will be sent upon request. Always write letters on a separate sheet from your order.

## Woodside Seed Growers Company

ROCKY FORD, COLORADO

Ship by Mail, Express, Freight

AMOUNT ENCLOSED

Date ..... 194.....

Cash, \$.....

Your Name .....

(Please write very plainly)

Draft .....

Postoffice .....

P. O. Order .....

County ..... State .....

Street and No.

P. O. Box No. .... R. F. D. No. ....

Express Order .....

Name of town to which you wish

Freight or Express Shipment made .....

Stamps .....

NOTICE: All sales made subject to customary disclaimer of the seed trade.

WOODSIDE SEED GROWERS CO.

Pkts.	Ozs.	Lbs.	KINDS OF SEED	PRICE
			CANTALOUPE—Early Hale's Best	
			Hale's Best No. 36	
			New Ideal	
			Hale's Best No. 112	
			Woodside's Winner	
			Mildew Resistant No.	
			Market Surprise	
			Perfected Perfecto (or Superfecto)	
			Early Otero	
			Pride of Wisconsin	
			Sugar Queen Melon	
			Hearts of Gold	
			Improved Pink Meat (or Burrell Gem)	
			Pearl Pink (or Abbott's Pearl)	
			Imperial Sunset (or Salmon Tint Honey Ball)	
			Honey Ball	
			Golden Melodew	

We pay all Postage and Express Charges at the prices listed in Catalogue.

QUANTITY			KINDS OF SEED	PRICE
Pkts.	Ozs.	Lbs.	Amount Carried Forward	
			<b>WATERMELON—Cut Red Tom Watson</b>	
			Wondermelon (Improved Kleckley Sweet)	
			Stone Mountain	
			Klondike (Brown Seeded)	
			Klondike (Black Seeded)	
			Winter Queen (Black Seeded)	
			Winter Queen (Grey Seeded)	
			Early Kansas	
			Cuban Queen	
			<b>HONEY DEW—Regular Green Meat</b>	
			Golden Rind Honey Moon	
			Golden Beauty Casaba	
			Honey Rock	
			<b>CABBAGE—Copenhagen Market</b>	
			Golden Acre	
			<b>CUCUMBER—Davis Perfect</b>	
			Early Fortune	
			Woodruff's Hybrid	
			Black Diamond	
			<b>LETTUCE—New York No. 54</b>	
			<b>ONIONS—Yellow Sweet Spanish</b>	
			White Sweet Spanish	
			<b>Total</b>	

EXTRA—With each order of \$1.00 or more, we will send an ounce of any of our favorite varieties of Cantaloupe Seed to anyone who will send us the names of five MARKET GARDENERS or five people who buy Vine Seeds. State Variety.

Name	R. F. D. No.	Town	State

# Green Meat Honey Dew



GREEN MEAT HONEY DEW

The Honey Dew, although classed as a fall and winter melon, has become popular all during the shipping season of cantaloupes. Although there have been many different selections made in trying to introduce a melon superior, very few have proven desirable for any length of time. The Honey Dew requires a longer growing season than the cantaloupe and in the fall of the year if stored away from the freezing temperature can be kept for quite a long period, in many cases until Christmas.

The average size is about 6 inches in diameter and 7 to 8 inches long; with a creamy white, smooth skin and turning at maturity to a light golden color; green flesh, very thick, fine grained and extra sweet to the extreme rind.

The quality of our Honey Dew seed was extra fine the past season.

**PRICE:** Pkt. 5c; oz. 10c;  $\frac{1}{4}$  lb. 35c;  $\frac{1}{2}$  lb. 65c; 1 lb. \$1.25; 5 to 10 lbs. @ \$1.10 per lb. 10 to 25 lbs. @ \$1.00 per lb.; 25 lbs. or more @ 90c per lb. Prepaid.

---

---

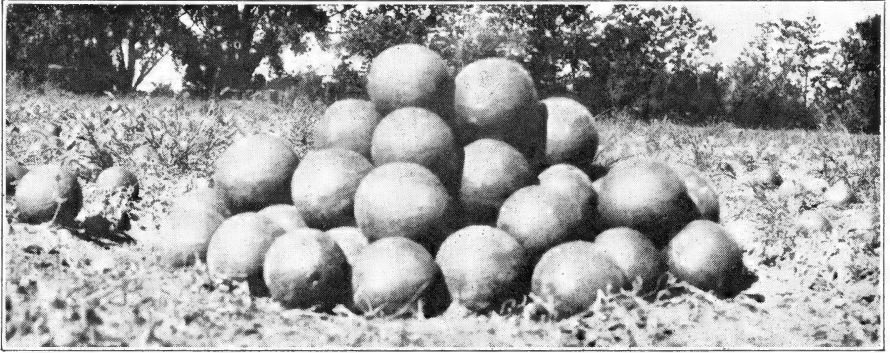
## Golden Melodew

It resembles the Honey Dew in color of rind and flesh. The true type runs oval in shape and medium size; the golden rind is covered by a pearly-grey netting which gives it a most attractive appearance. The rich, spicy flavor appears to be a combination of that of the Honey Dew and cantaloupe and is highly praised by all lovers of melons.

It can be picked and shipped about the same as the Honey Dew and is fully two weeks earlier than that variety.

**PRICE:** Pkt. 5c; oz. 10c;  $\frac{1}{4}$  lb. 35c;  $\frac{1}{2}$  lb. 65c; 1 lb. \$1.25; 5 to 10 lbs. @ \$1.10 per lb. 10 to 25 lbs. @ \$1.00 per lb.; 25 lbs. or more @ 90c per lb. Prepaid.

# Golden Rind Honey Moon



**GOLDEN RIND HONEY DEW**

This melon is very attractive. The rind is a rich golden color even on the under side. The melon does not spot or sunburn like the Honey Dew. It is very prolific and runs very uniform in size. Averages smaller than the Honey Dew and is about two weeks earlier. The flesh is a bright emerald-green to the rind. It does not have the excessive sweet flavor of the Honey Dew but a distinct flavor which is praised by all. The vines make a vigorous growth and are remarkably disease resistant, and the melon is a splendid shipper and keeper.

This melon should not be picked until it will slip easily off the vine for when they are dead ripe the flavor is at its best.

**PRICE:** Pkt. 5c; oz. 10c;  $\frac{1}{4}$  lb. 35c;  $\frac{1}{2}$  lb. 65c; 1 lb. \$1.25; 5 to 10 lbs. @ \$1.10 per lb. 10 to 25 lbs. @ \$1.00 per lb.; 25 lbs. or more @ 90c per lb. Prepaid.

---

---

# Golden Beauty Casaba

This melon grows from 6 to 8 inches in diameter, is nearly round slightly pointed at the stem end. The wrinkled skin is a beautiful golden-yellow when ripe and the rind is very hard. The flesh is pure white and very thick. Golden Beauty is the best flavored Casaba and the most popular market variety.

The seed we offer is our own Colorado-grown.

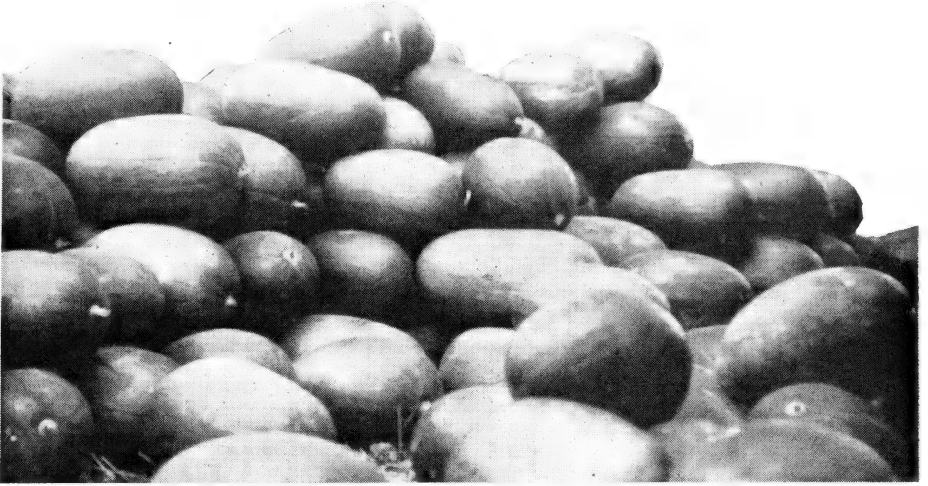
Do not pick for shipping until they lose their green, shiny appearance. They are not in best condition for eating until the rind will give under pressure.

**PRICE:** Pkt. 5c; oz. 10c;  $\frac{1}{4}$  lb. 35c;  $\frac{1}{2}$  lb. 65c; 1 lb. \$1.25; 5 to 10 lbs. @ \$1.10 per lb. 10 to 25 lbs. @ \$1.00 per lb.; 25 lbs. or more @ 90c per lb. Prepaid.

---



# Black-Seeded Klondike Watermelon



**BLACK-SEEDED KLONDIKE WATERMELONS**

This New Improved Selection excels all other types of the dark green oblong Klondike Watermelons yet introduced. The flesh is a brilliant red color, extending to within one-half inch of the rind, melting and deliciously sweet. Very small black seeds and popular with California growers. Weighs from 20 to 25 pounds and will mature in about 85 days. Rind is thin but extra tough which makes it an ideal shipping or trucking melon. For growers wishing a medium sized, sweet, juicy black seeded melon, believe this variety unexcelled.

**PRICE:** Pkt. 5c; oz. 10c;  $\frac{1}{4}$  lb. 35c;  $\frac{1}{2}$  lb. 65c; 1 lb. \$1.25; 5 to 10 lbs. @ \$1.10 per lb.  
10 to 25 lbs. @ \$1.00 per lb.; 25 lbs. or more @ 90c per lb. Prepaid.

---

---

# Brown-Seeded Klondike Watermelon

Similar in shape to the Black Seeded melon, is a fine melon for local use, and reasonably distant markets, is an oblong melon of medium size, and of dark green color. The flesh is bright red, melting and sweet, and contains but few small mottle brown seeds. On account of the seed being small, one pound will plant almost as much as two pounds of the ordinary variety.

**PRICE:** Pkt. 5c; oz. 10c;  $\frac{1}{4}$  lb. 35c;  $\frac{1}{2}$  lb. 65c; 1 lb. \$1.25; 5 to 10 lbs. @ \$1.10 per lb.  
10 to 25 lbs. @ \$1.00 per lb.; 25 lbs. or more @ 90c per lb. Prepaid.

---

# Cut-Red Tom Watson Watermelon



CUT-RED TOM WATSON

A favorite old standby in districts demanding a large sized wonderful shipping melon; the rind is thin but very tough; has a dark green color, prominent veins as it ripens to a lighter shade. The flesh is fine grained of a deep red color and very juicy and sweet; melons are oblong in shape with rounded ends.

The seed we offer this season was saved from select melons weighing from 25 to 50 pounds each.

PRICE: Pkt. 5c; oz. 10c;  $\frac{1}{4}$  lb. 35c;  $\frac{1}{2}$  lb. 65c; 1 lb. \$1.25; 5 to 10 lbs. @ \$1.10 per lb. 10 to 25 lbs. @ \$1.00 per lb.; 25 lbs. or more @ 90c per lb. Prepaid.

---

## Winter Queen Watermelon

**BLACK-SEEDED**—This variety has generally been known as a Winter melon. Wherever introduced have sold at good prices, far outselling ordinary melons.

The melon is round; color a very light green, faintly striped with a darker green. When fully ripe, closely resembles the Honey Dew in color except for the light stripe. It has a thin, tough rind. The flesh is a bright pink, solid and stringless, with a few small, black, shiny seeds set firmly near the rind. The flavor is delicious.

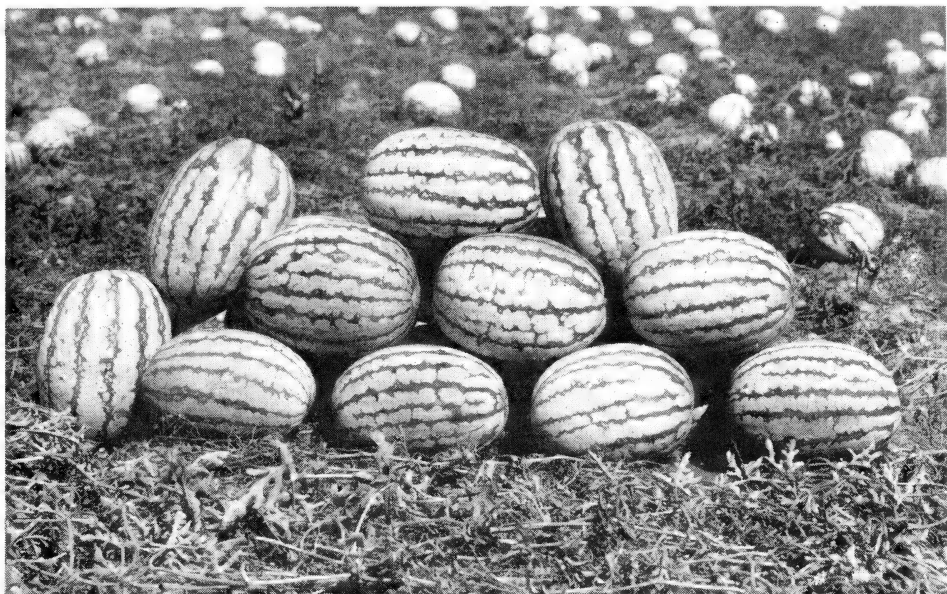
**GREY-SEEDED**—This strain was developed in Utah. In appearance it resembles the black-seeded variety, but averages larger in size and is a little earlier. It is a great favorite in Utah and the Northwest. Our seeds of both strains Colorado grown. Every season Winter Queen watermelons sell at a premium in this district.

They will keep nearly all winter and are a great treat when all other melons are gone. We advise every lover of watermelons to give it a trial.

PRICE: Pkt. 5c; oz. 10c;  $\frac{1}{4}$  lb. 35c;  $\frac{1}{2}$  lb. 65c; 1 lb. \$1.25; 5 to 10 lbs. @ \$1.10 per lb. 10 to 25 lbs. @ \$1.00 per lb.; 25 lbs. or more @ 90c per lb. Prepaid.

---

# Cuban Queen Watermelon



CUBAN QUEEN

The Cuban Queen is very attractive, is slightly oblong and grows very large. Flesh is a very bright red and seeds are exceedingly small and white. Rind is a light green with a darker mottled stripe making a very beautiful appearance. This melon is mostly heart and it ripens clear through with no hard centers. It is an early variety, has a medium thin rind and is tough enough to ship to distant markets. Maturing in about 80 days. Our supply of this variety grown the past season is very limited, therefore, advise you order early.

**PRICE:** Pkt. 5c; oz. 10c;  $\frac{1}{4}$  lb. 35c;  $\frac{1}{2}$  lb. 65c; 1 lb. \$1.25; 5 to 10 lbs. @ \$1.10 per lb.  
10 to 25 lbs. @ \$1.00 per lb.; 25 lbs. or more @ 90c per lb. Prepaid.

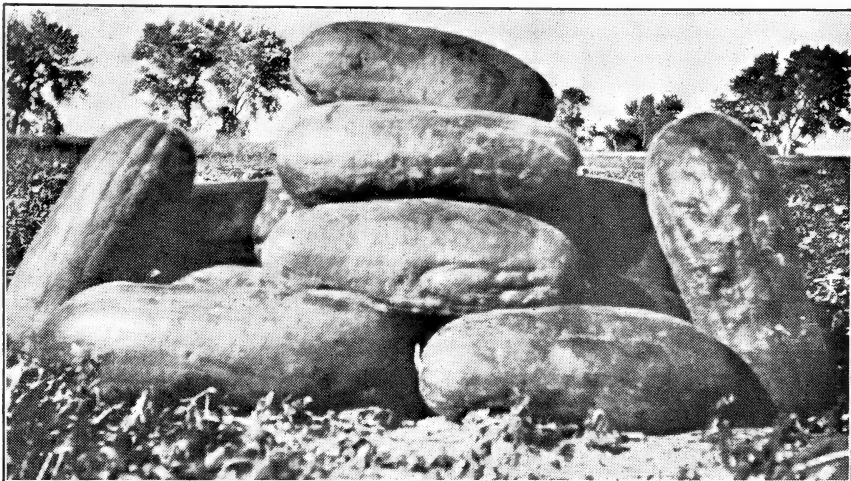
---

---

**ALL SEED GROWN  
UNDER OUR OWN SUPERVISION**

# New Wonder Watermelon

(An Improved Kleckley Sweet)



NEW WONDER WATERMELON

This splendid variety is the finest flavored melon introduced in recent years. No other melon has ever attained such popularity for home use and near-by markets. As originally introduced, the rind was too thin and tender to permit shipping, but by careful selection this defect has been largely overcome.

At the present time New Wonder is the favorite shipping melon with our Colorado growers, and rapidly growing in favor in other sections of the country. The melons grow 18 to 24 inches in length, 10 to 12 inches through, averaging about 35 pounds in weight, oblong in form, with very dark-green skin, flesh deep scarlet red, with solid heart, stringless, with few seeds, set near the rind.

It grows larger than the "Kleckley" and has produced melons weighing 60 pounds. Shape is similar to the Watson. The skin is a dark glossy-green.

**PRICE:** Pkt. 5c; oz. 10c;  $\frac{1}{4}$  lb. 35c;  $\frac{1}{2}$  lb. 65c; 1 lb. \$1.25; 5 to 10 lbs. @ \$1.10 per lb. 10 to 25 lbs. @ \$1.00 per lb.; 25 lbs. or more @ 90c per lb. Prepaid.

---

## Stone Mountain Watermelon

(Also Called "Dixie Belle")

This melon is a great favorite in many sections of the South, Middle West and South West. It is a great seller in the roadside markets. It grows large; rather round in shape and is dark green in color. The flesh is a deep red, has but few seeds and the flavor is all that could be desired. For home and nearby markets (where a round melon is favored) it has proven a winner.

**PRICE:** Pkt. 5c; oz. 10c;  $\frac{1}{4}$  lb. 35c;  $\frac{1}{2}$  lb. 65c; 1 lb. \$1.25; 5 to 10 lbs. @ \$1.10 per lb. 10 to 25 lbs. @ \$1.00 per lb.; 25 lbs. or more @ 90c per lb. Prepaid.

---

# Early Kansas Watermelon



EARLY KANSAS WATERMELON

This melon is rapidly gaining popularity in all the mid-western markets; for local markets, also truck hauling, is one of the favorites, due to the outstanding appearance; being a large oval almost round with block ends; the rind is a dark green color with alternate stripes of a lighter shade. The flesh is a rich red color nearly to the rind and has a wonderful flavor. The Seed we offer was grown in this district the past season and saved from melons that averaged thirty-five to forty pounds. The average maturity is from 80 to 85 days.

**PRICE:** Pkt. 5c; oz. 10c;  $\frac{1}{4}$  lb. 35c;  $\frac{1}{2}$  lb. 65c; 1 lb. \$1.25; 5 to 10 lbs. @ \$1.10 per lb.  
10 to 25 lbs. @ \$1.00 per lb.; 25 lbs. or more @ 90c per lb. Prepaid.

---

ALL OF OUR WATERMELONS ARE GROWN IN THE ROCKY FORD DISTRICT ON SPECIALLY SELECTED SANDY SOIL, AND GROWN UNDER IRRIGATION, WHICH ASSURES HIGHLY FLAVORED, SWEET, JUICY MELONS OF PROPER TYPE AND SEED WITH HIGH STRONG GERMINATION.

# Golden Acre Cabbage

*The Earliest Round Head Cabbage Yet Introduced*

This cabbage is becoming popular, as it matures from 10 to 12 days earlier than the Copenhagen Market. The heads are small to medium in size, all maturing about the same time. The plants may be set from 10 to 12 inches apart, making a heavy tonnage.

The heads are round, very solid and of splendid quality. Give it a trial both for early market and home use. The seed we offer is grown for us by the best-known Danish growers.

PRICE: Pkt. 5c; oz. 20c;  $\frac{1}{4}$  lb. 65c;  $\frac{1}{2}$  lb. \$1.25; 1 lb. \$2.25

5 to 10 lbs. @ \$2.00 per lb. Prepaid.

---

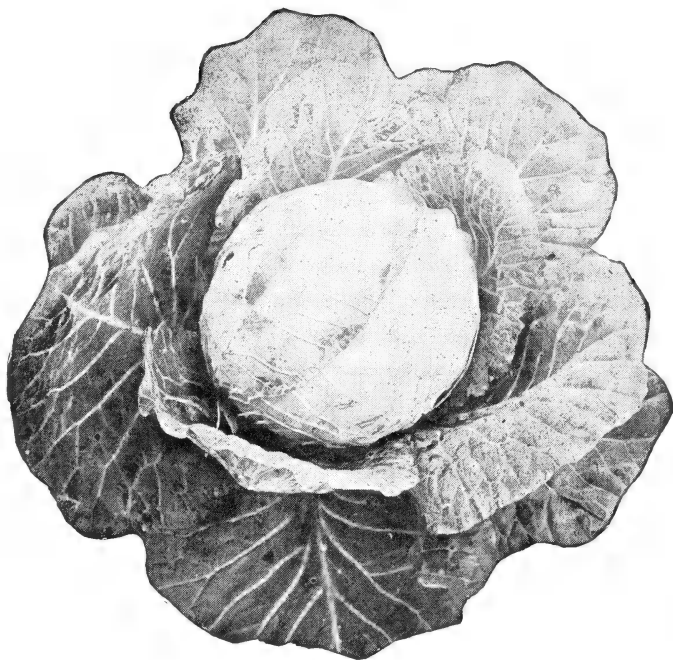
---

# Copenhagen Market Cabbage

*Market Gardeners' Favorite*

The heads are round, very solid, and exceptionally large, for an early variety, averaging from 5 to 8 pounds in weight. It is as early as the Jersey Wakefield, and makes a much heavier yield. It is short-stemmed but makes a vigorous, compact

growth, with but a few outer leaves, which are medium light green. The compact growth of the plant, the solidity of the head, its excellent flavor and extreme earliness, all combine to make the **Copenhagen Market** one of the most desirable early cabbages.



COPENHAGEN MARKET

---

The seed we offer is imported direct from Denmark by ourselves, and is the best that can be secured.

---

PRICES: Pkt. 5c; oz. 15c;  $\frac{1}{4}$  lb. 45c; 1 lb. \$1.75; 5 to 10 lbs. @ \$1.65 per lb. Prepaid.



# Yellow Sweet Spanish Onions

(UTAH STRAIN)



UTAH STRAIN SEED

This strain of Yellow Sweet Spanish Onion was originated in Utah. Seeing its merits, Pieters-Wheeler, an established seed growing firm in Northern California, whom we feel are one of the leaders in careful selection of the type of bulbs necessary to produce the quality of seed we are glad to ship and recommend to our customers, have for the past several seasons made further developments through selection and breeding and is now one of the outstanding Yellow Sweet Spanish Strains. Is a very large globe shape, four and five heavy golden brown outside skins and white flesh, being one of the mildest onions known today. Thousands of acres of this variety are grown in the Western states each season and shipped from coast to coast. When properly and thoroughly cured, is a good keeper and a splendid shipper. Many growers report a yield of 1000 up to 1400 crates per acre, the average weight per crate being from 42 to 44 pounds. An average of two and one-half pounds of seed are planted per acre. A trial of this strain Valencia Onion Seed will be convincing.

PRICES: Pkt. 15c; oz. 35c;  $\frac{1}{4}$  lb. \$1.35;  $\frac{1}{2}$  lb. \$2.65; 1 lb. \$5.00;  
5 to 10 lbs. @ \$4.75 per lb.; over 10 lbs. @ \$4.50 per lb. Prepaid

---

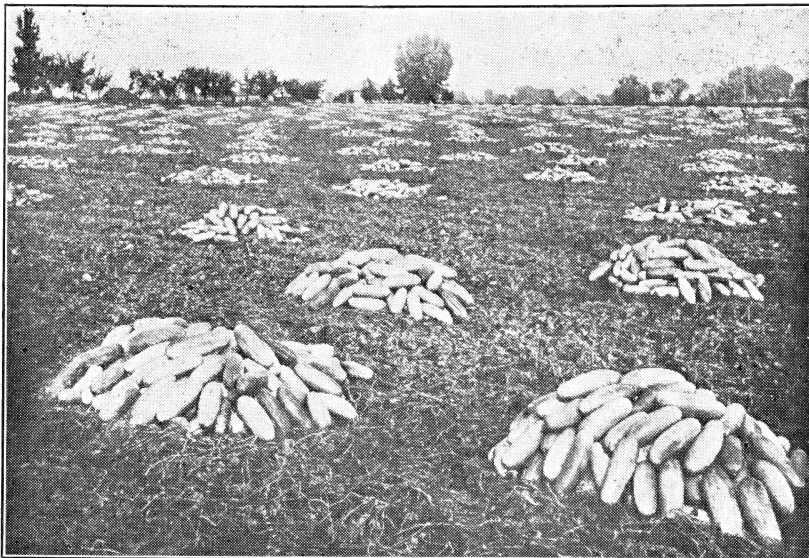
---

## White Sweet Spanish Onions

Large globe shaped White Onion of very mild flavor. Somewhat lighter in yield than the Yellow Sweet Spanish above illustrated, under the same growing conditions will produce about two-thirds the number of pounds per acre but are ten days to two weeks earlier in maturing. This seed also grown under contract for us by Pieters-Wheeler who specialize in the highest quality and type onion bulbs for seed purposes exclusively.

PRICES: Pkt. 15c; oz. 35c;  $\frac{1}{4}$  lb. \$1.35;  $\frac{1}{2}$  lb. \$2.65; 1 lb. \$5.00  
5 to 10 lbs. @ \$4.75 per lb.; over 10 lbs. @ \$4.50 per lb. Prepaid

# Superior Cucumber Seed



A CUCUMBER SEED FIELD

## Early Fortune Cucumber

One of the finest types of the White Spine ever produced, in some respects resembling the Davis Perfect. The cucumbers when fully grown measure about nine inches in length, slightly tapering at the ends. The color is a rich dark green. The flesh is thick and firm and pure white in color; it has but few seeds.

The vines are vigorous growers, set fruit early and are very productive.

The Early Fortune is recommended as one of the very best early market varieties.

PRICES: Pkt. 5c; oz. 10c;  $\frac{1}{4}$  lb. 25c;  $\frac{1}{2}$  lb. 45c; 1 lb. 85c;  
5 lbs. or more @ 75c per lb. Prepaid.

---

## Woodruff's Hybrid Cucumber

A very uniform, dark green variety, holding the dark color well into maturity. Long, slim and well proportioned, tapering slightly toward stem end, bloom end less tapering. Ends are blunt.  $10\frac{1}{2}$  to 12 inches long by  $2\frac{1}{2}$  inches in diameter.

PRICES: Pkt. 5c; oz. 10c;  $\frac{1}{4}$  lb. 25c;  $\frac{1}{2}$  lb. 45c; 1 lb. 85c;  
5 lbs. or more @ 75c per lb. Prepaid.



---

---

## Davis Perfect Cucumber

The color is dark, glossy green, shape slender and symmetrical, average length 10 to 12 inches. Contains but few seeds and is ideal for slicing. The vines are extremely vigorous and productive and resist blight better than other long sorts. A great favorite in all sections of the South for shipping to northern markets. For market gardeners it is one of the most profitable varieties yet introduced.

**PRICES:** Pkt. 5c; oz. 10c;  $\frac{1}{4}$  lb. 25c;  $\frac{1}{2}$  lb. 45c; 1 lb. 85c  
5 lbs. or more @ 75c per lb. Prepaid.

---

---

## Black Diamond Cucumber

IT STAYS GREEN

A handsome, early medium sized, prolific variety. Fruits weigh about  $1\frac{1}{4}$  to  $1\frac{1}{2}$  pounds, symmetrical, nearly square ended. Very dark green, holds color and firmness well. 7 to 8 inches long by  $2\frac{1}{2}$  inches in diameter.

**PRICES:** Pkt. 5c; oz. 10c;  $\frac{1}{4}$  lb. 25c;  $\frac{1}{2}$  lb. 45c; 1 lb. 85c  
5 lbs. or more @ 75c per lb. Prepaid.

---

---

## New York No. 54 Lettuce

This variety is resistant to tip burn and will make a sure head under any normal conditions if planted in the right season, which is between April and August and does best if planted on rich ground. It is a hybrid cross and resembles the number 12. A heavy structured, compact type and a much better base also smoother leaf than the 515, is a darker color but similar in shape.

**PRICES:** Pkt. 5c; oz. 10c;  $\frac{1}{4}$  lb. 35c;  $\frac{1}{2}$  lb. 65c; 1 to 10 lbs. @ \$1.25 per lb.;  
10 to 25 lbs. @ \$1.15 per lb. Postpaid.

---

---

# FOR SUPERIOR QUALITY

# ORDER

# WOODSIDE SEED

---

---

*Our*  
**MOTTO:**

*“QUALITY,  
SERVICE  
and a  
SQUARE DEAL  
TO ALL”*